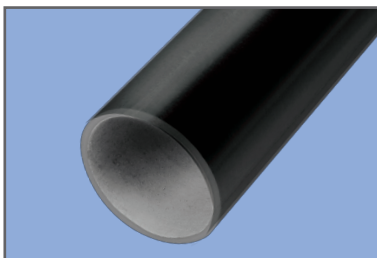
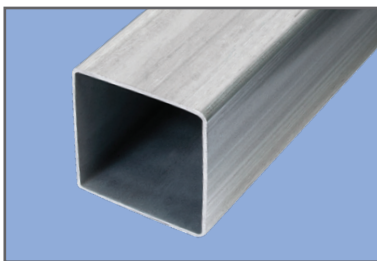
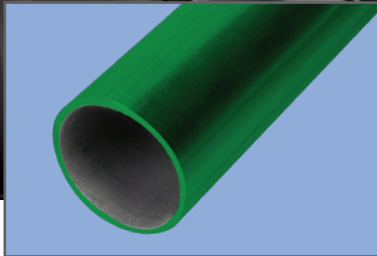
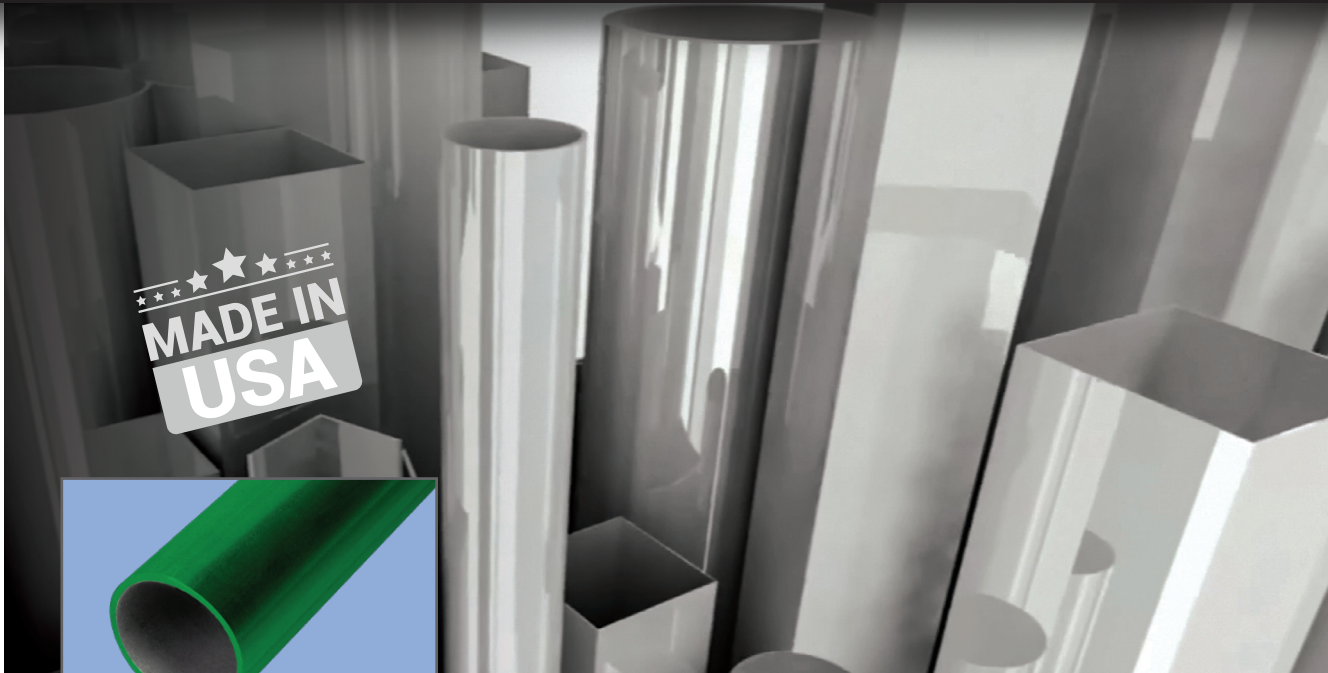




Strength. Security. Selection.

Quality steel fence pipe and tubing for the professional contractor.



US Premier Tube Mills is a leading manufacturer of high quality steel tubing for the high security, industrial/commercial, and residential markets.

We manufacture our fully-galvanized products with superior corrosion resistance in a variety of gauges, diameters, and lengths (40'+) to meet demanding industry standards. PT 40 is also available with swaged top rail.

PT 40	High Strength Pipe for Commercial, Industrial and High Security
PT 20	Light Commercial and Industrial
PT 15	Light Commercial and Residential
PTR Residential	Ornamental and Residential
PTS Squares	Ornamental and Specialty Fencing
PTC Color	Color Coated Rounds and Squares

You'll find our tubing in: ■ Chain Link Fences ■ Cart Corrals ■ Pet Kennels ■ Gates ■ Stalls

YOUR SOURCE FOR QUALITY STEEL FENCE PIPE AND TUBING

US Premier Tube Mills | 2855 Michigan Road, Madison, IN 47250 | P: 812.265.7001 | F: 812.274.0345 | contact@USPTmills.com

USPTMILLS.COM

Framework Sizes and Dimensions

Product	Dec. Equivalent	Wall Thickness	Gauge	Weight Lbs/Ft	Pcs Bundle
Framework 1-3/8" O.D.					
PT 15	1.315"	.072"	15	0.96	91
PT 20	1.315"	.080"	14	1.06	91
Residential	1.315"	.047"	18	.064	61
	1.315"	.055"	17	.074	61
	1.315"	.065"	16	.087	61
Framework 1-5/8" O.D.					
PT 15	1.660"	.072"	15	1.22	61
PT 20	1.660"	.085"	14	1.43	61
PT 40	1.660"	.111"	12	1.84	61
Residential	1.660"	.047"	18	0.81	61
	1.660"	.055"	17	0.94	61
	1.660"	.065"	16	1.11	61
Framework 1-7/8" O.D.					
PT 15	1.900"	.072"	15	1.41	61
PT 20	1.900"	.095"	14	1.74	61
PT 40	1.900"	.120"	11	2.28	
Residential	1.900"	.047"	18	0.93	61
	1.900"	.055"	17	1.08	61
	1.900"	.065"	16	1.27	61
Framework 2-3/8" O.D.					
PT 15	2.375"	.072"	15	1.77	37
PT 20	2.375"	.095"	13	2.31	37
PT 40	2.375"	.130"	10	3.12	37
Residential	2.375"	.047"	18	1.17	37
	2.375"	.055"	17	1.36	37
	2.375"	.065"	16	1.60	37
Framework 2-7/8" O.D.					
PT 20	2.875"	.110"	12	3.25	19
PT 40	2.875"	.160"	9	4.64	19
Framework 3-1/8" O.D.					
PT 40	3.500"	.160"	8	5.71	19
Framework 4" O.D.					
PT 40	4.000"	.160"	8	5.71	19

SQUARE Sizes and Dimensions

Product	Dec. Equivalent	Gauge	Weight Lbs/Ft	Pcs Bundle
Square 2" O.D.				
	2"	16	1.71	50
	2"	15	1.89	50
	2"	14	2.17	50
Square 2-1/4" O.D.				
	2.25"	16	1.93	50
	2.25"	15	2.13	50
	2.25"	14	2.45	50
Square 2-1/2" O.D.				
	2.50"	16	2.15	50
	2.50"	15	2.38	50
	2.50"	14	2.73	50

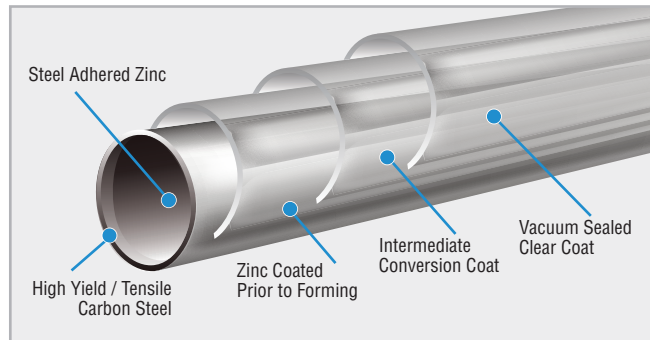
- **US Premier Tube Mills 3 mil Polyester and 10 mil Polyolefin Powder Coat** meets or exceeds the coating requirements of ASTM F1043 "Standard Specification for Strength and Protective Coatings on Steel Industrial Chain Link Fence Framework".
- Our Polyester and Polyolefin Powder Coat - Brown, Green and Black colors are in compliance with ASTM F934 "Standard Specification for Standard Colors for Polymer-Coated Chain Link Fence Material".
- Powder Coat Color is available on our PT 40, PT 20, PT 15 and all other tubing we supply.

All Tubing Available in: **GALVANIZED POLYESTER or POLYOLEFIN**



Compliance Specifications for Polyester and Polyolefin Elastomer Powder Coating per ASTM F1043

Polyester	Thickness:	3 mil
	Adhesion:	Compliance with Cross Hatch Test ASTM D3359-B
	Color:	ASTM F934
	Weathering:	ASTM D 1499 Weatherometer 1000 hours
Polyolefin	Thickness:	10mil
	Adhesion:	Compliance to ASTM F1043 8.1.2.1
	Color:	ASTM F934
	Weathering:	ASTM D 1499 Weatherometer 1000 hours



USPTM quality ensures that all fence framework meets and exceeds ASTM F1043.

PT40 framework meets and exceeds ASTM F1043 "Standard Specification for Strength and Protective Coatings on Steel Industrial Chain Link Fence Framework".

We are a domestic manufacturer of domestic steel products made from only domestic steel sources.



YOUR SOURCE FOR QUALITY STEEL FENCE PIPE AND TUBING

US Premier Tube Mills | 2855 Michigan Road, Madison, IN 47250 | P: 812.265.7001 | F: 812.274.0345 | contact@USPTmills.com

USPTMILLS.COM